

FRAMCOLOR 2001 INTENSE

FPP TECHNOLOGY
FAST PIGMENTATION PROCESS

- ✓ Fast Pigmentation Process Technology
- ✓ Up to 100% of grey hair covered
- ✓ 20 minutes processing time (longer times do not darken the result)
- ✓ Permanent color
- ✓ With extract of liquorice

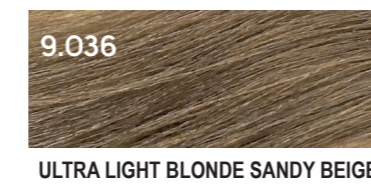
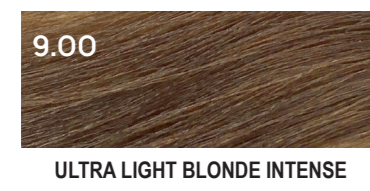
INTENSE NATURAL	FROZEN BROWN	MOKA	COOL GOLD	HAZELNUT	SANDY BEIGE	COPPER	AMBER	DEEP RED	EXTREME VIOLET	MOTHER OF PEARL	PLATINUM
-----------------	--------------	------	-----------	----------	-------------	--------	-------	----------	----------------	-----------------	----------

Level

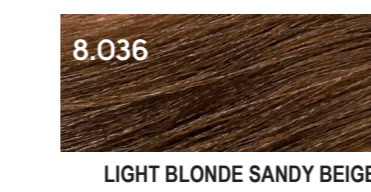
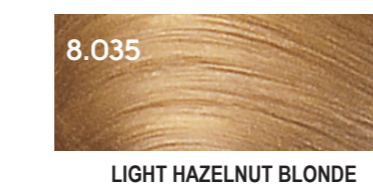
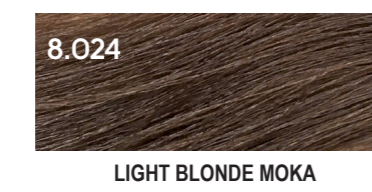
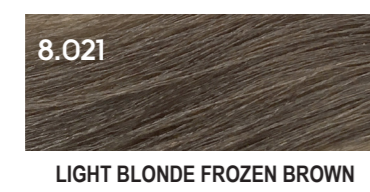
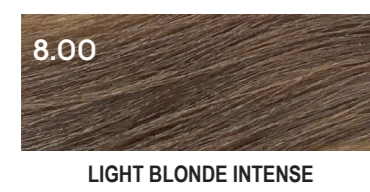
10



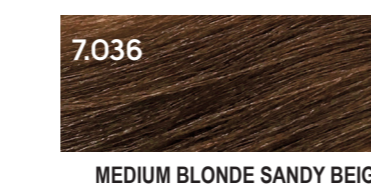
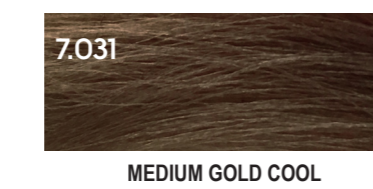
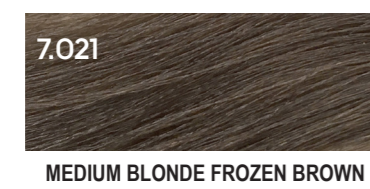
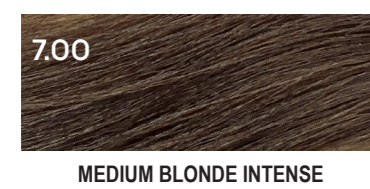
9



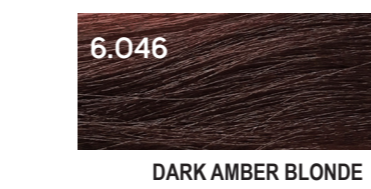
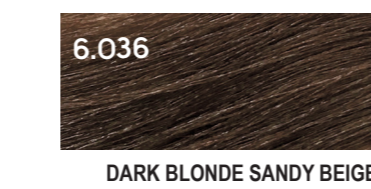
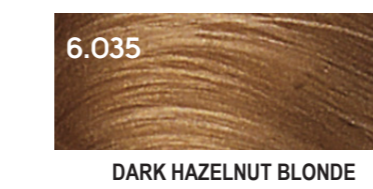
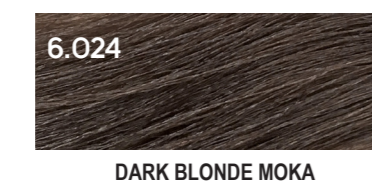
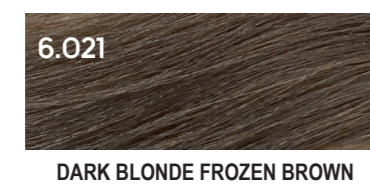
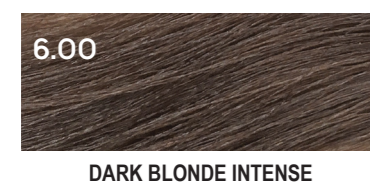
8



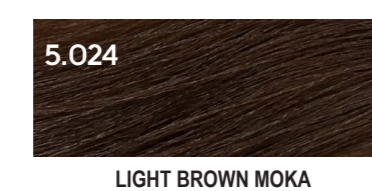
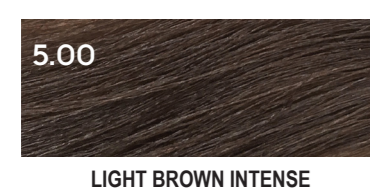
7



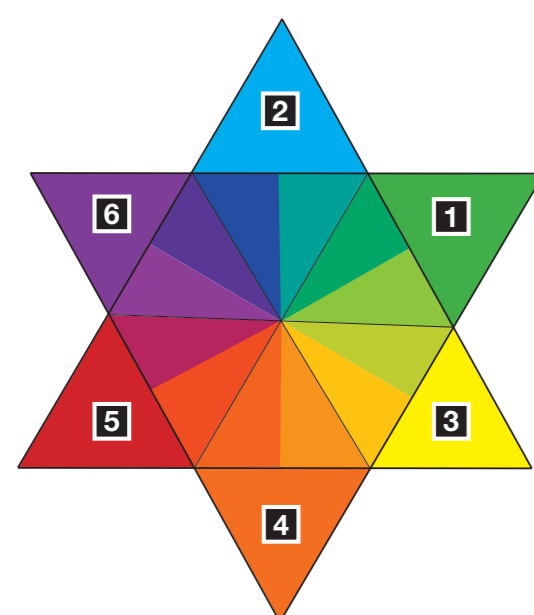
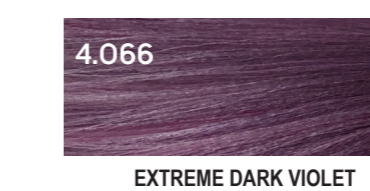
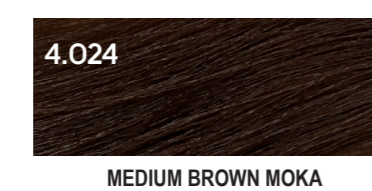
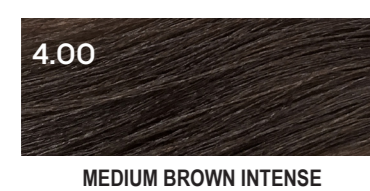
6



5



4



DIRECTIONS FOR USE:

- Prepare the color mixture immediately before use.
- The developer with which FRAMCOLOR 2001 INTENSE has to be diluted to prepare the coloring mixture is FRAMESI PROFESSIONAL ACTIVATOR.
- The ratio between FRAMCOLOR 2001 INTENSE and the developer must always be 1:2.

