

FRAMCOLOR PURE PIGMENT PLUS

- ✓ Direct ready-to-use pigments
- ✓ The acid pH does not open damaged hair cuticle, so color lasts longer and hair is more composed and shiny
- ✓ Mixable nuances for umpteen creations
- ✓ Direct application without dilution

NATURALS

/3*



HONEY BLONDE

/62*



PEARL BLONDE

/31*



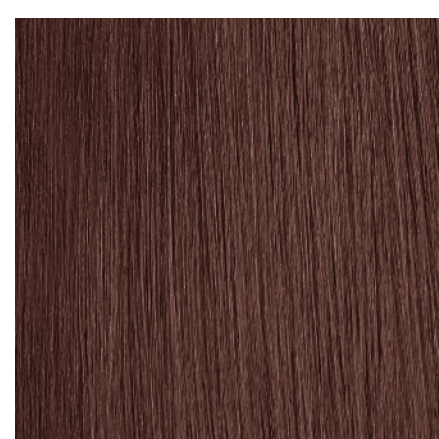
SANDY BLONDE

/24



COOL BROWN

/64*



WARM BROWN

/46*



AMBER

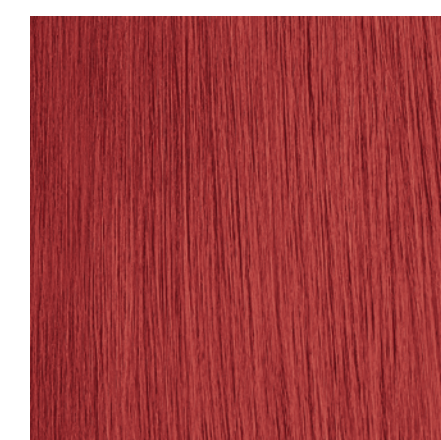
VIVID

/65



MAGENTA RED

/55*



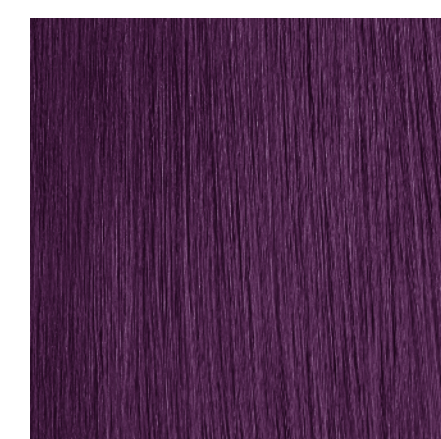
ABSOLUTE RED

/44*



INTENSE COPPER

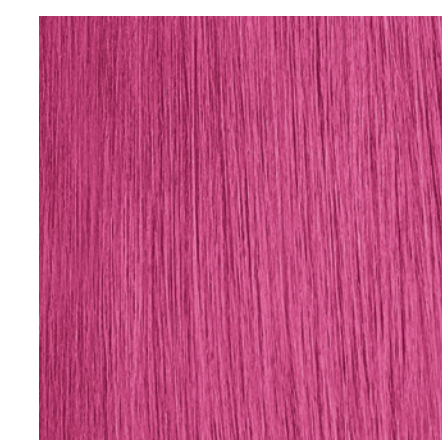
/56*



RED VIOLET

BOLD

/065



PINK

/22



BLUE

/66



DEEP VIOLET

/11



GREEN

/560



ORCHID

/00



CLEAR

INSTRUCTIONS

- Pro-Tect Cream (barrier cream) application.
- Application of color:
 - for exploited lengths and ends apply color to wet or dry hair directly;
 - for crazy coloring, lighten up to level 6-9 based on the nuance chosen and then apply.
- Development Time: process 15-20 minutes at room temperature.
- Rinsing & Color Method: when processing is complete, thoroughly rinse with cool water until water runs clear.

Lightening and coloring in a single step

On dry hair mixed with F2001 COLOR EXALT
(10 gr FPPP + 10 gr COLOR EXALT + 40 ml FRAMESI PROFESSIONAL ACTIVATOR da 10 a 40 vol.)

*This method is only permitted with the following nuances: /3, /31, /44, /46, /55, /56, /62, /64.